

EOAP Test Pit: 61

Location: 1 David Nicholls Close

Date of Excavation: 15-16 June 2013

Area of excavation: 1x1m

Weather conditions: Windy, cloudy with sunny intervals, heavy shower in pm.

Excavators: MS, LQ, LSL, NSL, KS, NS, CL


Report by: Gill Mellor, Leigh Mellor and Olaf Bayer




Location and elevation: E453683 N202712 H71.54m OD

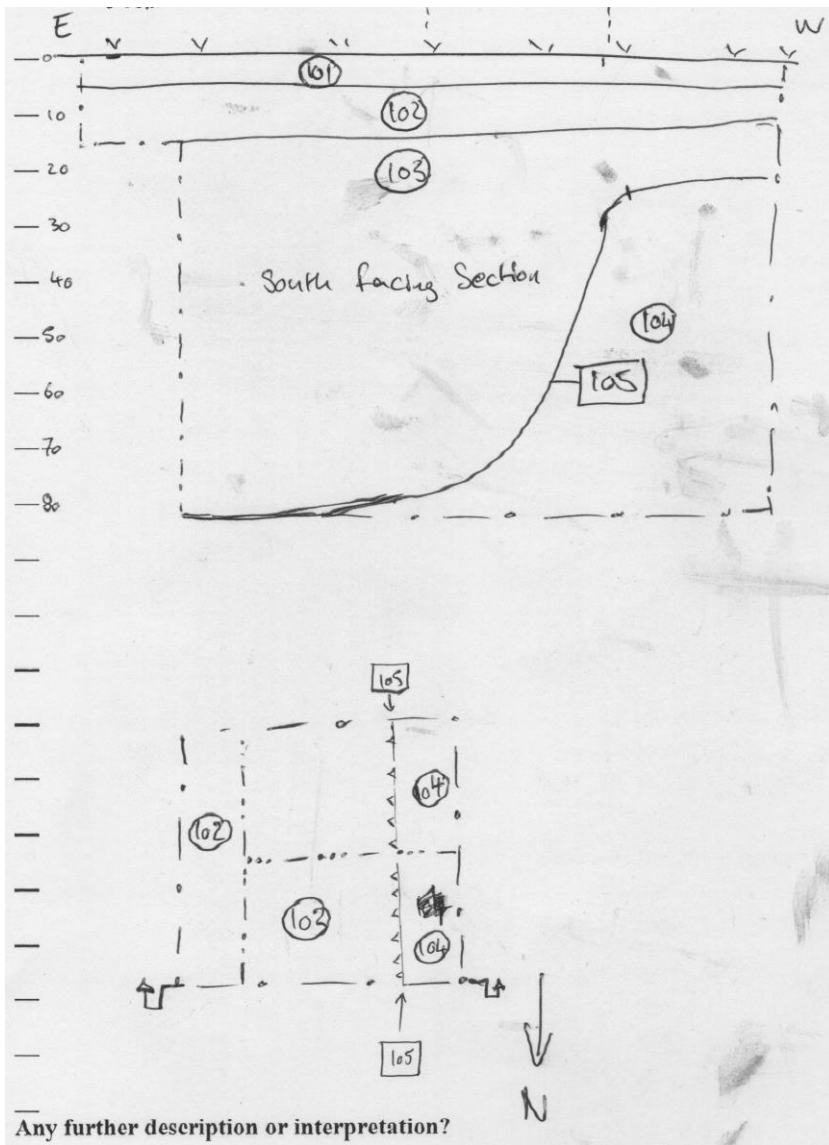
Introduction: One of a series of test pits excavated in the historic core of Littlemore in July 2013. Test pit 61 is located in the back garden of 1 David Nicholls Close. David Nicholls Close was built in the mid-1990s in the grounds of Lawn Upton House built in 1846 (see figure 3).

Excavation summary: Test pit 61 measured 1x1m by a maximum of depth of c. 0.80m. Turf (101) and modern levelling (102) had a combined depth of c 0.20m. Layer (102) overlay a spread of material (103) which slumped into the fill of c 0.5m deep, linear, North/South cut [105]. Fill/spread (103) contained modern construction debris (including fragments of plastic pipe). (103) and cut [105] are considered to be modern. [105] cuts natural deposits (104). A single sherd of possible Medieval pottery was found in turf (101), however, its provenience should be treated with caution as the turf is likely to have been imported rather than 'grown' *in-situ*.

Results:

Context	Type	Description	Soil sample	Comments/photo
101	layer	Matrix: Turf and topsoil Inclusions: Green plastic netting Finds: 1 sherd ?Brill Boarstall ware? Depth: Boundaries: 0.05m Contamination: Excavated: Spade, trowel	N/A	Turf and top soil(101) under excavation (facing south) 
102	layer	Matrix: Dry yellowy brown sand 60%, silt 40% Inclusions: Stones 28%, angular mostly about 25mm, charcoal Finds: Nail, glass, slag, CBM,	N/A	Layer 102 is probably modern levelling material associated with the landscaping of the garden for 1 David Nicholls close

		<p>pottery, frag. Clay pipe stem Depth: 0.15m Boundaries: Indistinct Contamination: Roots , worms Excavated: Mattock, trowel</p>		
103	fill	<p>Matrix: Dry very mixed, mostly yellow clay but with some darker more organic Inclusions: Pea grit, a number of rounded cobbles near SW corner, yellow plastic item in section at 0.25m depth Finds: Wood, CBM Depth: 0.8m Boundaries: Clear boundary with (104) Contamination: Roots, worms Excavated: Mattock, trowel, hand shovel</p>	N/A	<p>Modern fill (103) of modern cut (105). 103 under excavation facing south</p> 
104	layer	<p>Matrix: Dark brown grading to brown to red to yellow sandy, clayey silt Inclusions: None Finds: None Depth: 0.8m Boundaries: Distinct with (103) above Contamination: None Excavated: Trowel, mattock</p>		<p>Layer (104) is probably <i>in situ</i> subsoil. Photo below shows fill (103), cut (105) and natural deposits (104) under excavation. Facing south.</p> 
105	cut	<p>Steep sided, near vertical, north to south cut. Sharp break of slope at top, shallower break of slope at base</p>		<p>Modern cut possibly associated with construction of 1 David Nicholls close or its garage</p>



Any further description or interpretation?

Figure 1: TP61 Sketch plan and section

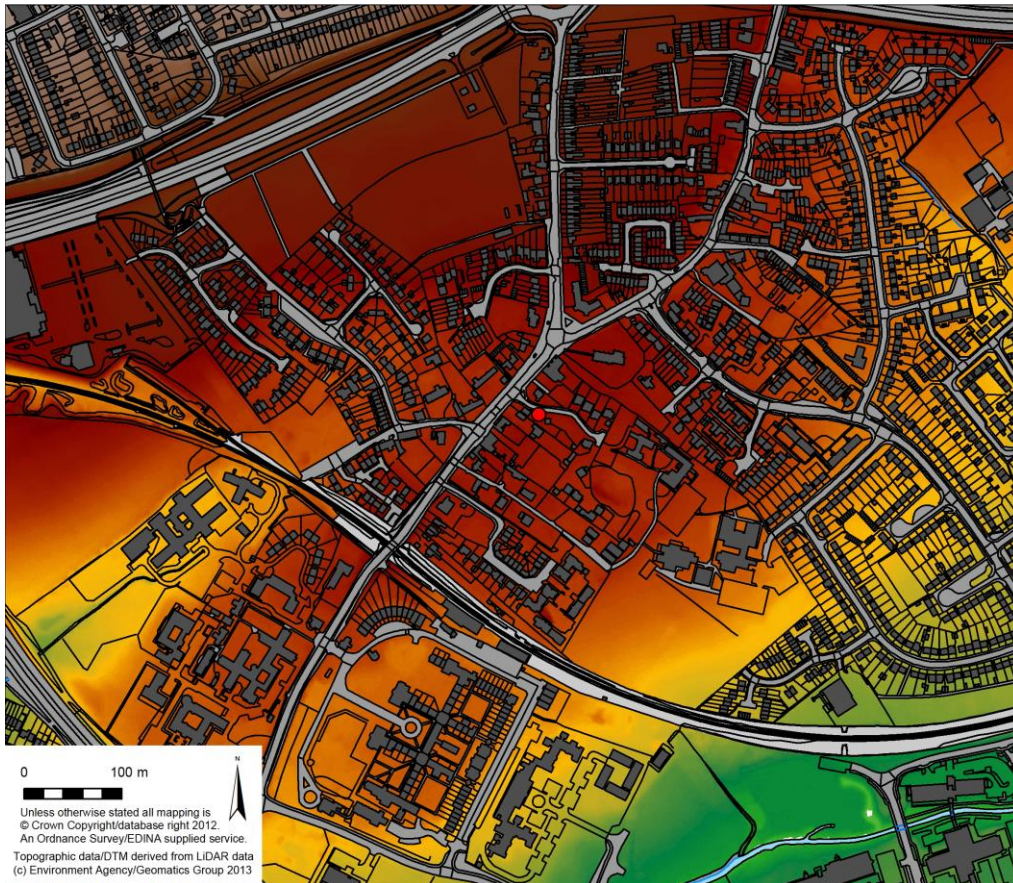


Figure 2: Test pit 61 location and topography

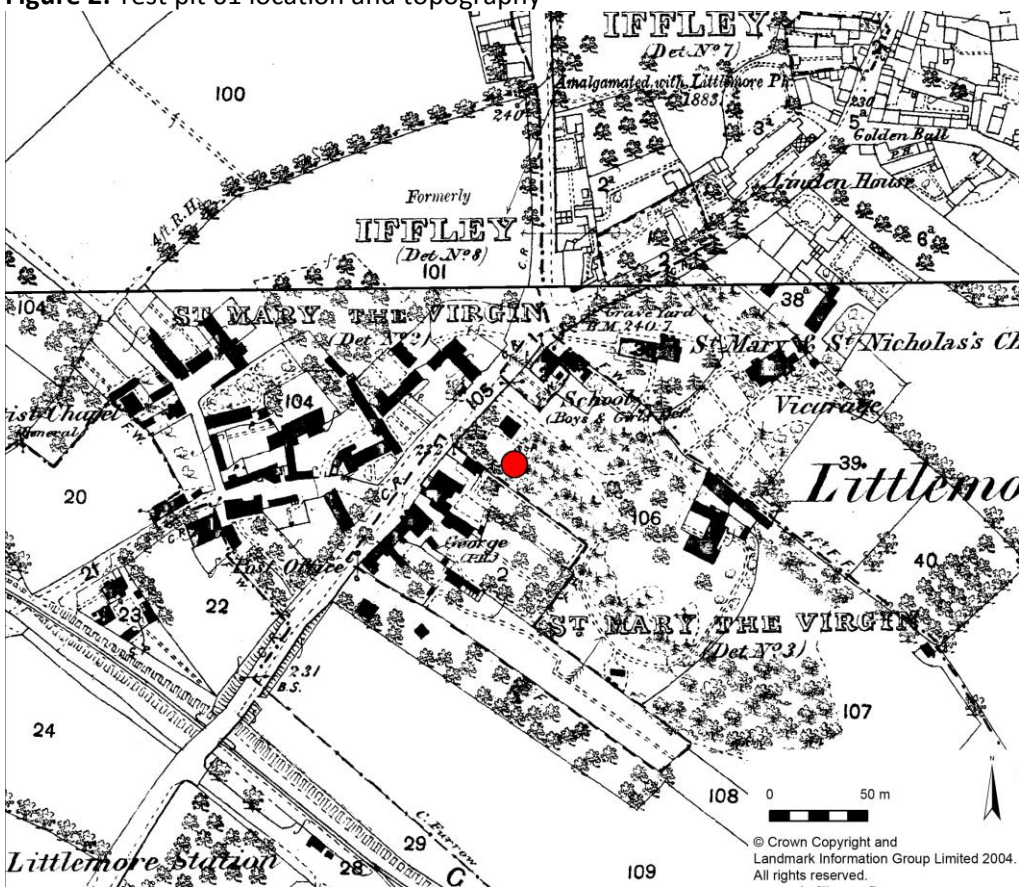


Figure 3: Test pit 61 c.1880 (Ordnance Survey First Edition Mapping)